

Grampa's Browns Corner Daily Blab 4-17-20

Good Morning, Campers.

Today's issue is boring. It is really only suited for nerds and eccentrics. The rest of you may as well quit now.

You have probably noticed that the way I publish has evolved. That is because Davy Sulock gave me some very helpful advice about creating a link instead of actually attaching a large document. I will share his words with you:

Hey Uncle Sandy,

I notice that these daily blabs sent as attachments seem to be about 8 MBs each total. That's pretty large for a daily e-mail attachment considering most people have limited storage space in their e-mail accounts. One of the benefits of sending it as an Imgur link is that it won't take up any space on anybody's e-mail since it's hosted on a separate site and not included as an attachment. Another thing to consider is mobile data since many people such as myself don't pay for unlimited plans and try to minimize mobile data usage. When you are viewing the Imgur link on your cell phone it's optimized for mobile so the amount of data your phone will

use will be approximately 1/5th the data required to view the PDF file included in these e-mail attachments. This probably doesn't matter at all currently considering everybody is at home on Wifi right now. Anyways, just sending you some more info. I won't be offended if you keep sending them as .doc and .pdf files or anything so no worries!

Cheers,
Davy

1. Go to <https://pdf2png.com/> and convert your PDF¹ into a ZIP of PNG files.
2. Extract the ZIP file to some place on your computer. You should now have a series of numbered PNG files that you can open as pictures on your computer.
3. Go to <https://imgur.com/>. Click on "New Post" (should be in the top left).
4. Click on "Choose Photo/Video."
5. Find and select the files that you extracted onto your computer in step 2.
6. Your files should now be uploading. There should be a button in the top right of the screen that says "Hidden" right beside the "Community" button. Once your upload is complete you will be able to click on that button.
7. Click on the "Hidden" button and it will show you the URL that you need to share with people. Click the copy button and it will copy the URL.

¹ Use PDF 995, a free download, to turn your Word Doc. Into a PDF. -TOG

8. Paste the URL wherever you want to send it to people.

So that is the story behind my now transmitting just a link. A little extra work here but it makes it essier for users I think.

Thank you, Davy!

OK if that bit of academia did not put you to sleep, I'll tell you a story about what I'll be working on today.



This is an image anyone can find by going to QAC Property Viewer on line and zooming in on Browns Corner. I have annotated it to show

key survey markers around the perimeter. In surveyor jargon, IRS = “Iron Rod Set”.

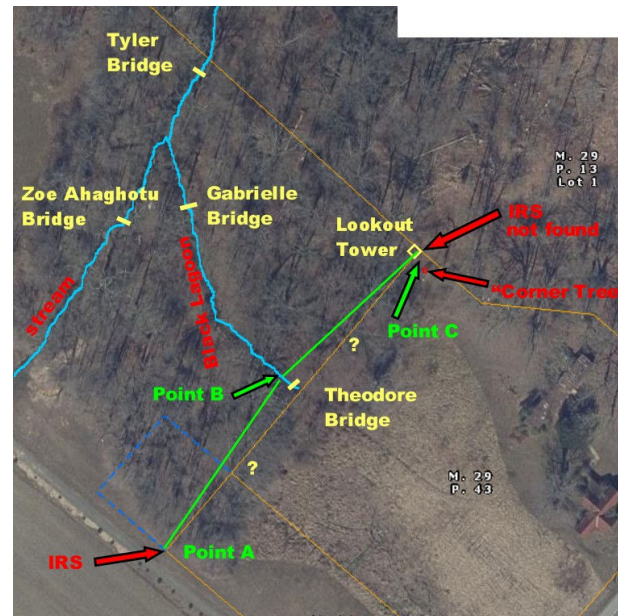
While I was quite pleased with the completed image because it shows clearly and accurately where our property boundaries are, it is not a very high resolution picture. I obtained it by taking a screen shot (press Alt + PrtScr) and copying it to Paint Shop Pro.

On the QAC Property Viewer you can get much higher resolution by zooming in. Trouble is, the higher resolution screen shot only shows a much smaller area. So by grabbing six



HR screen shots and assembling them in Digital Image Pro 10, I was able to create a higher resolution composite.

Don't worry if you can't see it well. It was really intended only for me. By zooming in on the woods I was able to create this image which I call **Survey Conundrum**.



I have annotated it to show The Stream, The Black Lagoon, the bridges, and the Lookout Tower which I have not yet placed there.

The problem is that out in the woods it is hard to know where “there” is. Here is what I have called the “**Corner Tree**” :



If you can zoom in you will see some little red flags of surveyor's tape which I tied to the barb wire which seems to turn a corner at that tree, suggesting that a long time ago, some farmer (Farmer Brown?) thought that it was the corner of his property. But some other things suggest that the Corner Tree may be actually several feet south of the corner and really located on the adjoining property. I used my 300 foot surveyor's tape to measure the distance from the road (MD 213) and found myself standing a few feet north of the Corner Tree.

So when I go out in the woods today I will set up my antique brass

surveyor's transit, a birthday present from Nana about thirty years ago.

Using the transit and surveyor's tape I will start at **Point A** and swing an angle toward **Point B**. I can't shoot a line to **Point C** because there are huge trees blocking the line of sight.

From **Point B** I will be able to get a straight line of sight to both **Point A** and **Point C**. Then the surveyor's tape will reveal exactly where **Point C** is. Maybe I'll get lucky and trip on the iron rod which should be there.

Simple right? Time's a wasting.

Love, *Grampa*